

## 8 Multiple Family Service

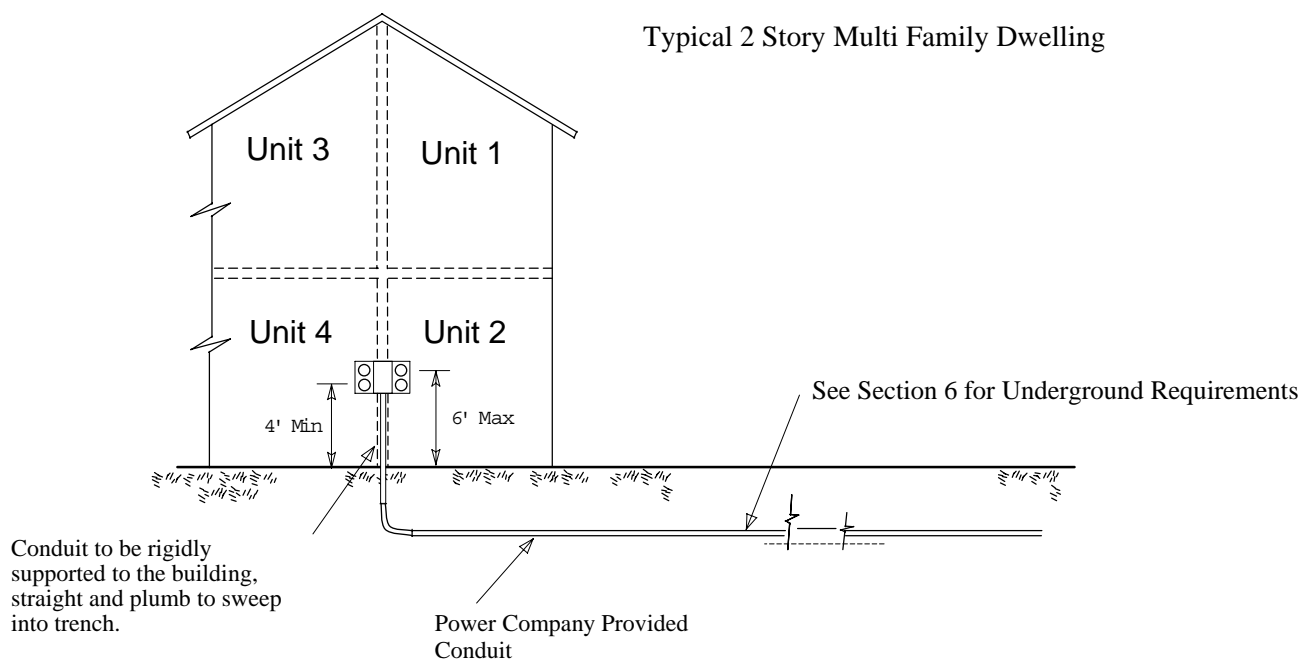
### 8.1 General

This section describes grouped service locations that provide separate metered services, for multi-family units, such as duplexes or apartments. *The Power Company requires grouping of service entrances at a common location.*

### 8.2 Underground Service

Conduit is preferred for multiple family underground services. Refer to section 6 for underground and conduit requirements.

**Figure 8-1 Underground Service**  
Multi-Family Dwelling

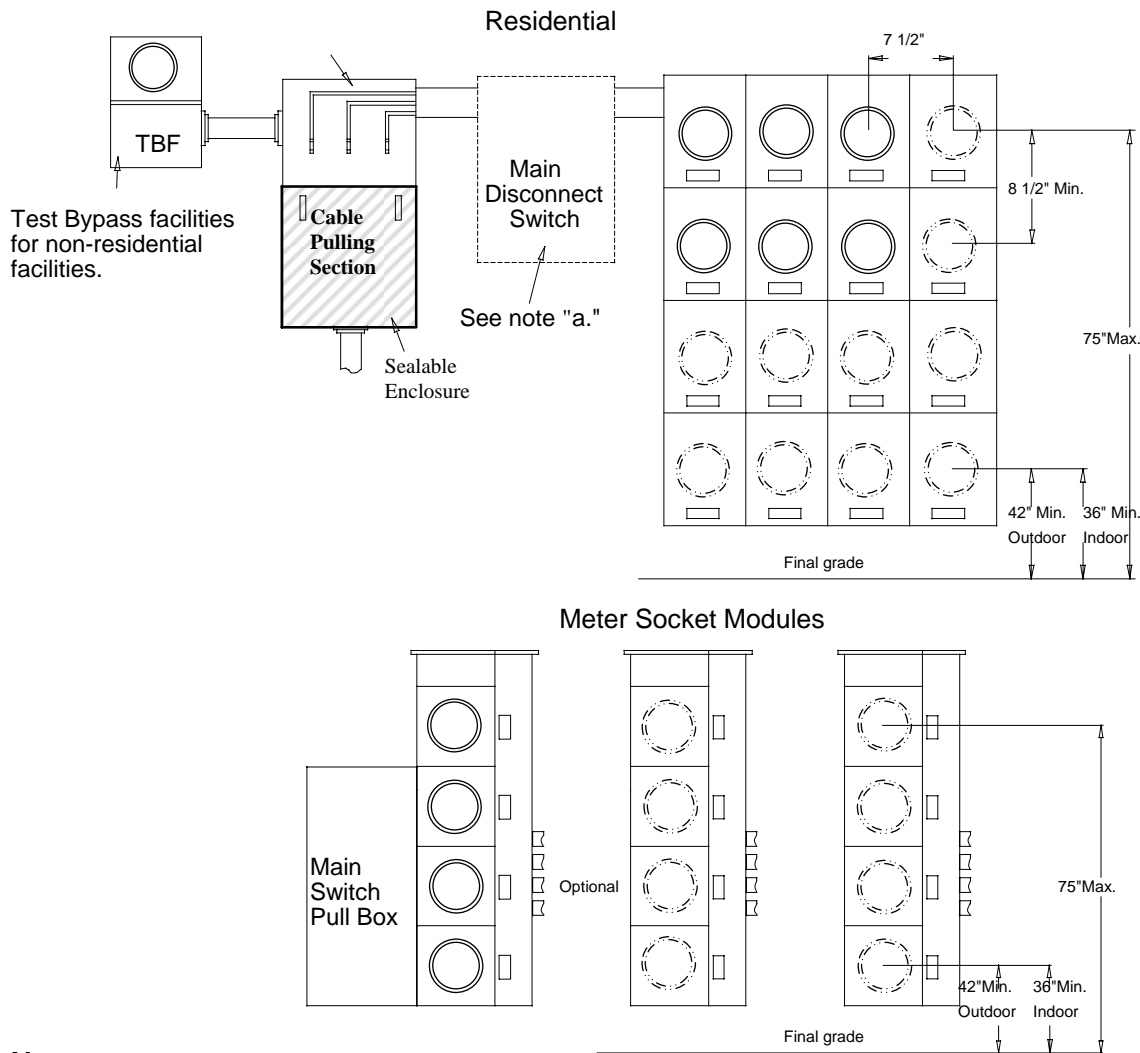


#### Notes:

- a. Electrical label or permit must be displayed on meter base.
- b. Each metered service must be permanently labeled to identify customer address by means of a metal or hard plastic engraved type label for two or more units.
- c. The Power Company will determine the exact location of the meter.
- d. All raceways and conduit must be sealed to prevent infiltration of water into the electrical equipment.
- e. See section 5 for clearances from gas meters.

**Figure 8-2 Multiple Meter Socket Installations for Underground and Overhead**

Typical Combination Service Termination Enclosure and Meter Socket Panels for Multi-Unit Applications.



**Notes:**

- a. Cable pulling section must be sized for Power Company service termination EUSERC 343 and must have bus extension drilled for landing lugs. *NEC requires main disconnect when more than 6 services are connected.* When the sum of distribution section ampacities exceed the pulling section ampacities the customer will be responsible to provide NEC approved load calculations.
- b. Each metered service must be permanently labeled to identify customer address by means of a metal or hard plastic engraved type label.
- c. When meter serves only lighting, test bypass facility is not required.

**8.3 Overhead Service**

The Customer is responsible to bring service entrance conductors from the service head to the Power Company’s point of attachment. The Power Customer will not extend conductors from the point of attachment to individual service heads. It will be the Customer’s responsibility to obtain permission for variances from the electrical code enforcing authority having jurisdiction.